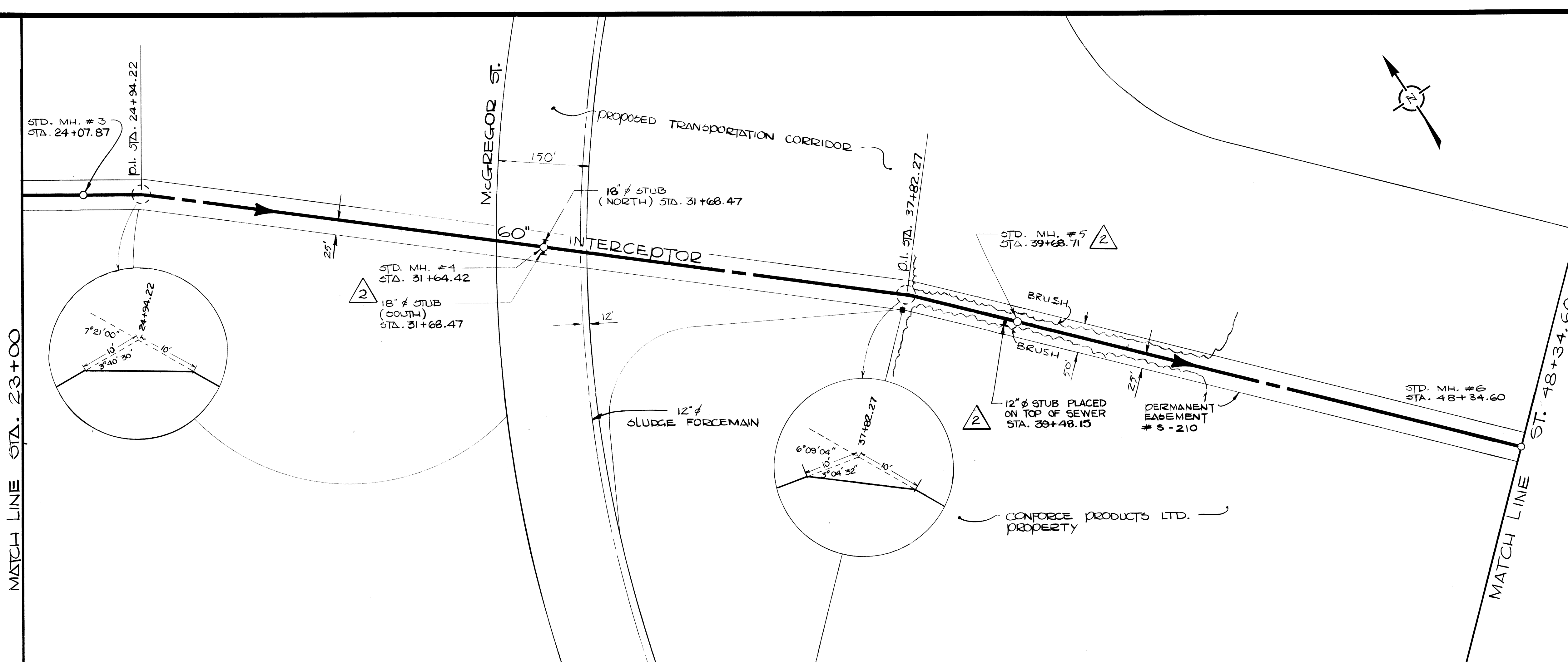


906



**LEGEND**

**WATERWORKS, WASTE AND DISPOSAL: UNDERGROUND UTILITIES**

PROPOSED FORCEMAIN, INTERCEPTOR OR SECONDARY SEWER ————

EXISTING FORCEMAIN, INTERCEPTOR OR SECONDARY SEWER ———— W.W.D. 24" SEWER

PROPOSED FEEDERMAIN ————

EXISTING FEEDERMAIN ———— W.W.D. 24" W.M.

W.W.D. — WATERWORKS, WASTE AND DISPOSAL

**OTHER UNDERGROUND UTILITIES**

COMMUNITY SEWER ————

COMMUNITY WATERMAIN ————

GAS ————

HYDRO DUCT ————

M.T.S. DUCT OR CABLE ————

STREET LIGHTING, RAILWAY SIGNAL OR TRAFFIC SIGNAL CABLE ————

**SURFACE UTILITIES**

COMMUNITY BOUNDARY LINE ————

FENCE LINE ———— X ———— X

POLE LINE ———— O ———— O

RAILWAY LINE ————

**MISCELLANEOUS SYMBOLS**

CATCH BASIN ———— O

CULVERT ———— [Symbol]

HYDRANT ———— [Symbol]

MANHOLE ———— O

HYDRO OR M.T.S. POLE ———— [Symbol]

LAMP STANDARD ———— [Symbol]

RAILWAY OR TRAFFIC SIGNAL STANDARD ———— [Symbol]

SURVEY BAR ———— [Symbol]

TREE ———— [Symbol]

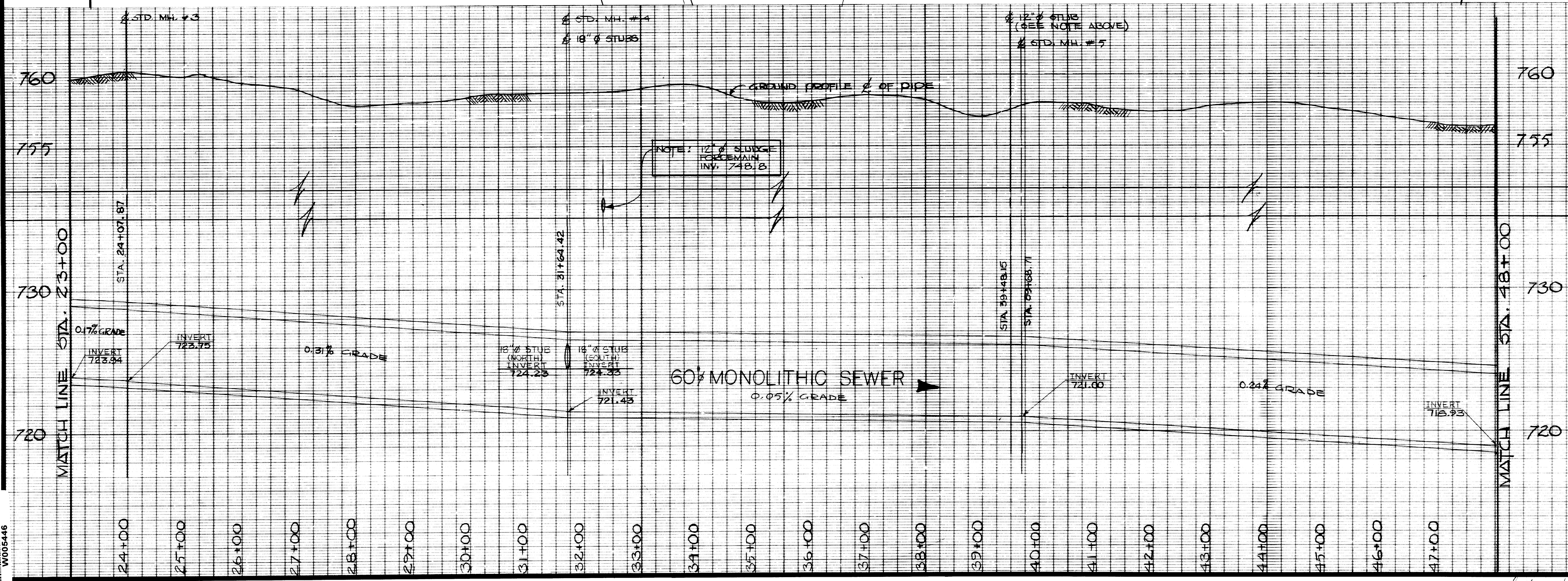
VALVE ———— [Symbol]

DIRECTION OF FLOW ———— [Symbol]

**NOTES**

**AS BUILT**

SURVEY      ENGINEERING      DATE



NO.	DESCRIPTION	DATE	BY
3	REVISED TO AS BUILT	79.04.04	L.A.N.
Δ	REVISED LOCATION / INVERTS OF 24" 18" & 12" STUBS	19.9.77	L.A.N.
Δ	REVISED CLASS OF JACKET/PUSHED PIPE	2.9.77	M.S.

**REVISIONS**

FIELD BOOK(S) NO. F-398, F-420, F-473

LAND SURVEY PLAN(S) NO. 13147

B. M.

SURVEYED BY D.M.G.

DATE MAR. 29, 1977

NOV. 8, 1974

**The City of Winnipeg**

Waterworks, Waste and Disposal Division

ENGINEERING BRANCH  
WASTE DISPOSAL

**NORTHWEST ST INTERCEPTOR**  
LEILA TO N.E.V.D.C.C.  
SECTION B - BERGEN CUTOFF RD.  
TO N.E.V.D.C.C.  
STA. 23+00 TO STA. 48+00

DESIGNED BY	DRAWN BY
CHECKED BY	DATE
APPROVED BY	JULY 5, 1977
SCALE	DRAWING NO.
HOR. - 1" = 100'	906
VERT. - 1" = 40'	

file # 1110468